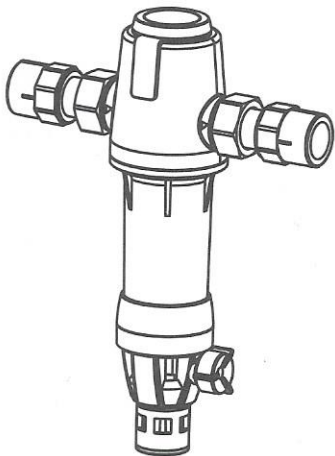




Pre-Filter



MODEL: QZBW20S-12

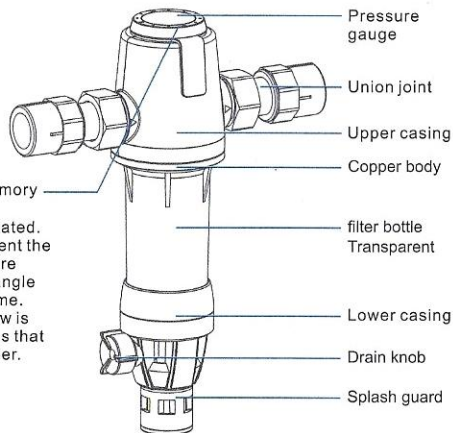
Please read this Manual carefully before use and keep it for future reference.

Product profile

Notes

- The product uses municipal tap water as raw water and can remove sand and gravel and pipe slag in the water through coarse filtration.

Components Display



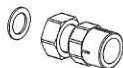
Note: The top scale can be rotated. The numbers and dots represent the month. The numbers or dots are aligned with the indicating triangle arrow to record the flushing time. For example, the triangle arrow is aligned with "12", which means that it has been flushed in December.

Pictures for reference only, please refer to the real product.

List of accessories



Manual X1



Union joint X2



PE pipe 1 set

Cleaning and Maintenance

Routine Maintenance

- The product is regularly maintained and the filter assembly is replaced by our professional staff to ensure the quality of the output water.
- Do not use strong volatile solvents such as soap, detergent, thinner, gasoline, alcohol, etc. when cleaning and maintaining the product, otherwise, it may cause crack, scratch and discoloration.
- Open the flushing valve regularly to drain waste and flush the filter assembly.

Daily Maintenance

- According to the water quality, please turn on the drain knob to flush the product at the right time, generally, the flushing interval is 15-30 days.
- When the filter is clogged, the water output is small and the flushing has no obvious effect, please contact the local sales and service outlets or customer service center of our company.

Quality of output water: Meet the requirements of "Sanitary Safety and Functional Evaluation Specification for Drinking Water Quality Processors - General Water Quality Processors" (2001).

【Main Ingredients or Components】

| | | |
|-------------------------------------------|------------|------------|
| 1. Stainless steel filter assembly | Model GL01 | 40µm 1 set |
| 2. Transparent PC casing | Model GL01 | 1 set |
| 3. Water inlet and outlet copper assembly | Model SX-1 | 1 set |
| 4. Scraping assembly | Model SX-1 | 1 set |

【Cautious】

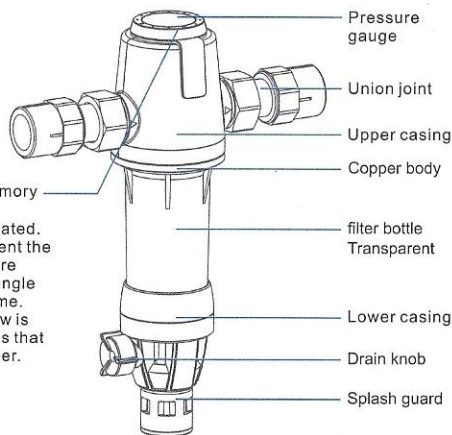
- Drain water and clean the filter regularly according to the requirements of the Manual.
- This product can only remove particulate impurities, and has no significant removal effect on other indicators.

Product profile

Notes

- The product uses municipal tap water as raw water and can remove sand and gravel and pipe slag in the water through coarse filtration.

Components Display



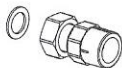
Note: The top scale can be rotated. The numbers and dots represent the month. The numbers or dots are aligned with the indicating triangle arrow to record the flushing time. For example, the triangle arrow is aligned with "12", which means that it has been flushed in December.

Pictures for reference only, please refer to the real product.

List of accessories



Manual X1



Union joint X2



PE pipe 1 set

Cleaning and Maintenance

Routine Maintenance

- The product is regularly maintained and the filter assembly is replaced by our professional staff to ensure the quality of the output water.
- Do not use strong volatile solvents such as soap, detergent, thinner, gasoline, alcohol, etc. when cleaning and maintaining the product, otherwise, it may cause crack, scratch and discoloration.
- Open the flushing valve regularly to drain waste and flush the filter assembly.

Daily Maintenance

- According to the water quality, please turn on the drain knob to flush the product at the right time, generally, the flushing interval is 15-30 days.
- When the filter is clogged, the water output is small and the flushing has no obvious effect, please contact the local sales and service outlets or customer service center of our company.

Quality of output water: Meet the requirements of "Sanitary Safety and Functional Evaluation Specification for Drinking Water Quality Processors - General Water Quality Processors" (2001).

【Main Ingredients or Components】

| | | |
|-------------------------------------------|------------|------------|
| 1. Stainless steel filter assembly | Model GL01 | 40µm 1 set |
| 2. Transparent PC casing | Model GL01 | 1 set |
| 3. Water inlet and outlet copper assembly | Model SX-1 | 1 set |
| 4. Scraping assembly | Model SX-1 | 1 set |

【Cautious】

- Drain water and clean the filter regularly according to the requirements of the Manual.
- This product can only remove particulate impurities, and has no significant removal effect on other indicators.

Installation Instructions

Notes

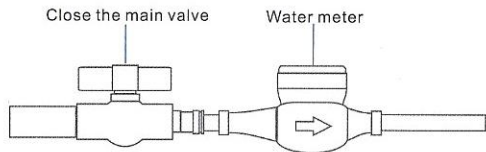
- Before installation, please read the Manual carefully, check whether the accessories are complete, and prepare the materials and tools required for installation.

QZBW20S-12

Machine Installation

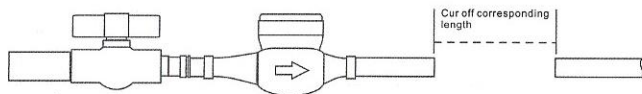
Step 1

Close the main pipe valve, discharge the remaining tap water in the pipe, and ensure that the copper valve and the filter bottle are tightened.



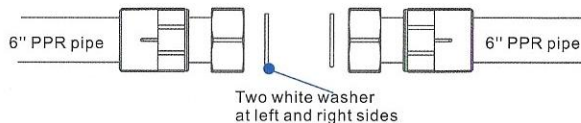
Step 2

Cut off the PPR pipe of corresponding length at the installation position of the pipeline according to the installation size of the pre-filter.



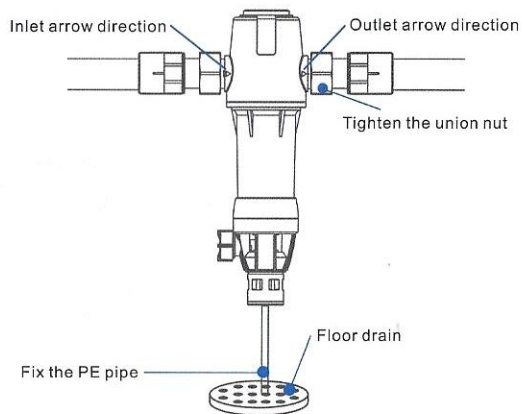
Step 3

Use a fuser to fuse the two union joints to the pipeline respectively.



Step 4

Tighten the union nuts at both ends of the copper inlet and outlet with pipe wrenches until the inner washer is compressed. Then insert one end of the drain PE pipe into the quick drain port at the bottom of the machine, and insert the other end into the floor drain or other drain and fix it.



Step 5

Slowly open the water inlet valve, then close the water outlet after the household water equipment can discharge water. Note to check whether the connection position of each part of the pre-filter is leaking or slowly seeping water, and then open and close the drain knob for several times to remove the air inside the machine (about 10 times) and check for water leakage. If there is water leakage, check whether the connection position is tightened, it is recommended to observe for 5 minutes.

Tips

1. Please regularly check whether the connection of the machine is leaking, so as to avoid damage to your home property.
2. When you go out for a long time or do not use the machine, please turn off the water source of the machine.
3. The water generated by flushing the machine shall be discharged through the sewage PE pipe, so there must be a floor drain or other drain near the installation position.
4. The sewage PE pipe must not be knotted or bent. It must be fixed after being inserted into the floor drain or drain to prevent excessive pressure during flushing, which may cause the pipe to be thrown out and cause hidden danger of water leakage.

Installation Warnings

When connecting the inlet and outlet pipes, please note the followings:

1. Turn off the valve of the indoor main water pipe and turn on the faucet to relieve pressure in the pipe.
2. Make sure that the water inlet and outlet pipes are connected to the water inlet and outlet of the machine respectively, do not connect them reversely.
3. If the welded pipe is used to install the inlet and outlet pipes, all the weldings shall be completed before the pipe is connected with the machine, otherwise, the heat generated by welding will damage the plastic parts.
4. PTFE tape should be wrapped around the threaded connection between the inlet and outlet pipes and the installation joints. Be careful not to make the threads staggered when tightening.
5. Do not hang other items on the filter to prevent damage.
6. Turn off the faucet and carefully observe whether there is leakage at the joint and filter. If there is leakage, it must be treated.

Please pre-flush the machine before using it

After installing the whole machine, flush the filter with tap water for 120 minutes to bring a better experience.

Safety Warnings

Notes

In order to ensure safe use and avoid physical injury and property damage to you and others, please be sure to observe the following safety precautions. Failure to observe the safety warnings and incorrect use may possibly lead to accidents.

Mean the 【prohibited】 contents



Direct sunlight is prohibited



Do not drink directly

- Avoid install and store the machine in places exposed to strong sunlight, which may cause aging of product components.
- Please do not bring the product in contact with or near flammable or explosive materials.
- Please do not put the product in contact with or near heat sources or open flames.

Mean the 【compulsory】 contents

- Disassembling the parts on the product by yourself is easy to damage the product, moving and handling by yourself is easy to operate improperly, and cause damage to the machine.



Professional is required

【Note】 The items which may possibly cause light injury or property loss

- The machine must not be installed outdoors. The product is suitable for the environment with temperature of 4-38°C and relative humidity of not more than 90%. When the water temperature drops to 0°C, the water source should be timely turned off and the remaining water in the machine should be drained to prevent the water from freezing and damaging the machine.

The working pressure of the product is 0.1-0.5MPa. When the water pressure is lower or higher, please install pressure boosting or reducing device accordingly.